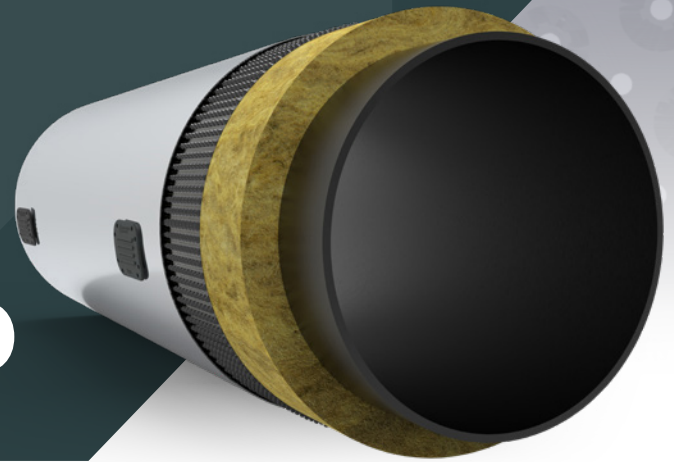




# Perforated Dimple Wrap

PVC

Patented



## PRODUCT DESCRIPTION

Integrity Products' Perforated Dimple Wrap is designed to create a consistent 6mm air gap between the insulation and the metal cladding. Used in conjunction with our vents and drains, this 3-part system creates the Integrity Products' Insulation Ventilation System. This high-quality Polyvinyl Chloride (PVC) material is design for flexibility and strength which can help protect the insulation and the outer cladding from mechanical damage. Its unique perforations and raised dimples allow any moisture or vapour trapped in the insulation to pass into the gap that has been created, drain to the 6 o'clock position and exit the system through the drains.

## PRODUCT APPLICATION

To extend the service life of the insulation and piping equipment, Integrity Products' Perforated Dimple Wrap is installed dimpled side out and fully encompasses the exterior of the insulation. It can be installed on all insulation types, on all pipe sizes and in hot and cold applications. Once installed the outer finish cladding is installed over the Perforated Dimple Wrap as normal keeping in mind that the Perforated Dimple Wrap has added a total of 12mm to the outer diameter of the insulation. The product can be utilised on new insulation systems in order to prevent moisture build up and also retro fit on damaged/soaked insulation in order to assist with drying.

## MATERIAL SPECIFICATIONS

<b>MATERIAL(S)</b>	<b>TENSILE STRENGTH</b>	<b>UV RESISTANCE</b>
Polyvinyl Chloride (PVC)	35 - 56 MPa	Excellent
<b>COLOR</b>	<b>ELONGATION</b>	<b>WORKING TEMP.</b>
Black	2 - 40%	-40°F to 194°F (-40°C to 90°C)
<b>DENSITY</b>	<b>SHRINKAGE</b>	<b>ASTM STANDARDS E84</b>
1.4 g/cm <sup>3</sup>	1.25%	Class A    Flame spread Class A    Smoke development

## INSTALLATION

The Integrity Products' Perforated Dimple Wrap comes in PVC rolls of 3 ft x 50 ft. This product is placed over the insulation (dimple side out) and secured into place with wire, banding, or tape. The metal cladding is placed over the Perforated Dimple Wrap and installed as normal.

**NOTE:** Please ensure to oversize the metal cladding as required in order to accommodate the PVC Dimple Wrap which adds 12mm to the Diameter.

